

Communication Tool Kit: Overview & Call to Action

Jacqui Kearns, EdD

Judith L. Page, PhD, CCC-SLP

Jane O'Regan Kleinert, PhD, CCC-SLP

Lou-Ann Land, MEd

Produced by:

University of Kentucky,

in partnership with the National Center State Collaborative (NCSC)

The contents of this product were developed under a grant from the Department of Education (PR/Award #:H373X100002, Project Officer, Susan.Weigert@Ed.gov). However, the contents do not necessarily represent the policy of the Department of Education and no assumption of endorsement by the Federal government should be made.



National Center and State Collaborative

1

Welcome to the National Center and State Collaborative Communication Tool Kit Module series. This series was written and produced by the University of Kentucky team including Dr. Jacqui Kearns, Dr. Jane Kleinert, Dr. Judy Page and Lou Ann Land, M.S..

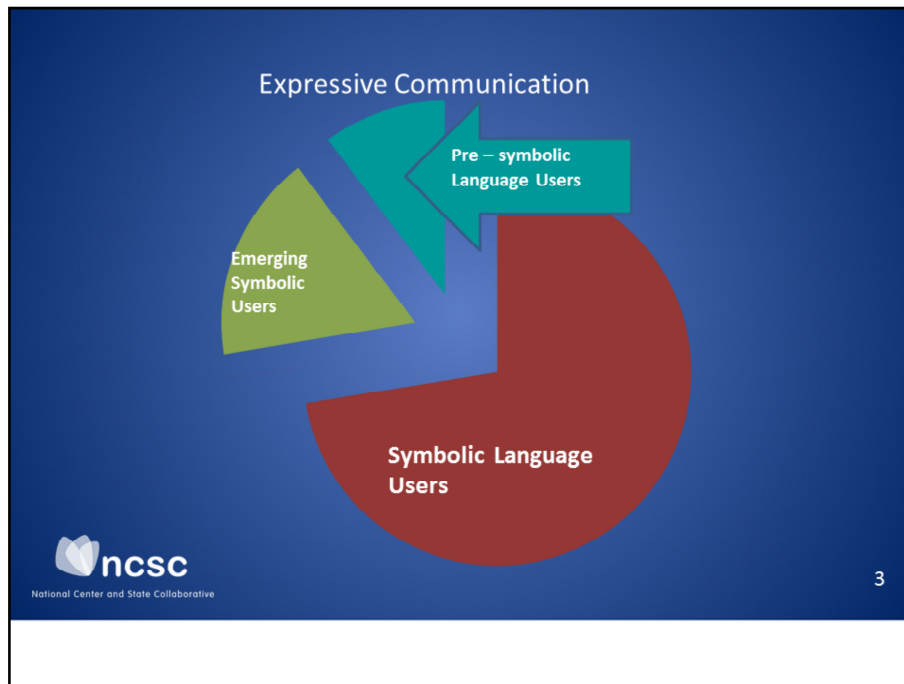
The US Department of Education Office of Special Education Programs funded this work under a grant to the University of Minnesota. The contents of this work do not necessarily represent the policy of the Department of Education and no assumption of endorsement by the Federal government should be made.



Welcome, I'm Dr. Kearns and I will be narrating this introduction to the NCSC Communication Tool Kit.

In this introduction, we will describe the data on communication for the population of students who take alternate assessments. We will share the data evidence-based practices for communication interventions. We will discuss the availability of AAC. We will issue a "call to action" for educators to provide students with communication intervention and the necessary communication supports. Finally we describe the tool kit resources including: the format, features, and options available in the seven tool kit modules.

Again, Welcome ! We hope this information is helpful to teachers and speech-language pathologists as you endeavor to improve communication results for students with significant cognitive disabilities.

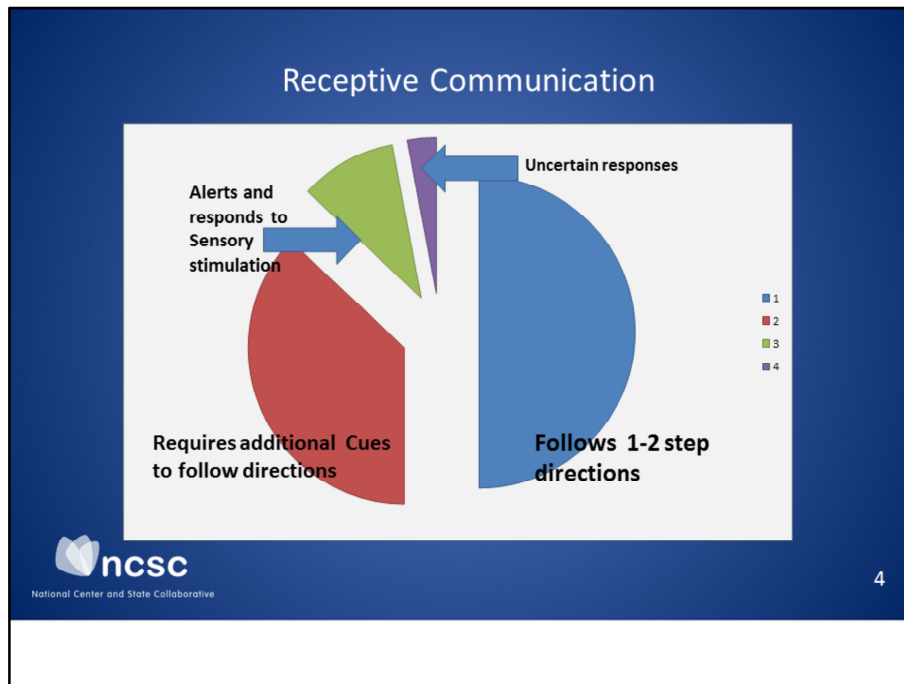


Expressive Communication is what a student can “say”, “sign”, or somehow indicate a message or intent. The pie chart indicates expressive communication of alternate assessment participants.

The majority (about 70% of students in the AA) indicated in red use symbolic communication receptively and expressively. These students are also emerging readers in that they read basic sight words and solve math problems with calculator support

Approximately 15 - 18% of the remaining students indicated in light green are Emerging Level of Symbolic communication meaning that they use pictures, signs, gestures to communicate a variety of intents expressively and they demonstrate consistent receptive responses.

The remaining 10-12% use body movements, cries, and facial expressions that must be interpreted by caregivers.



Receptive Communication is what the student understands. Following simple directions accommodating for motor, vision, hearing helps assess what a student understands. Students who present complex challenges are also most often underestimated in terms of their understanding.

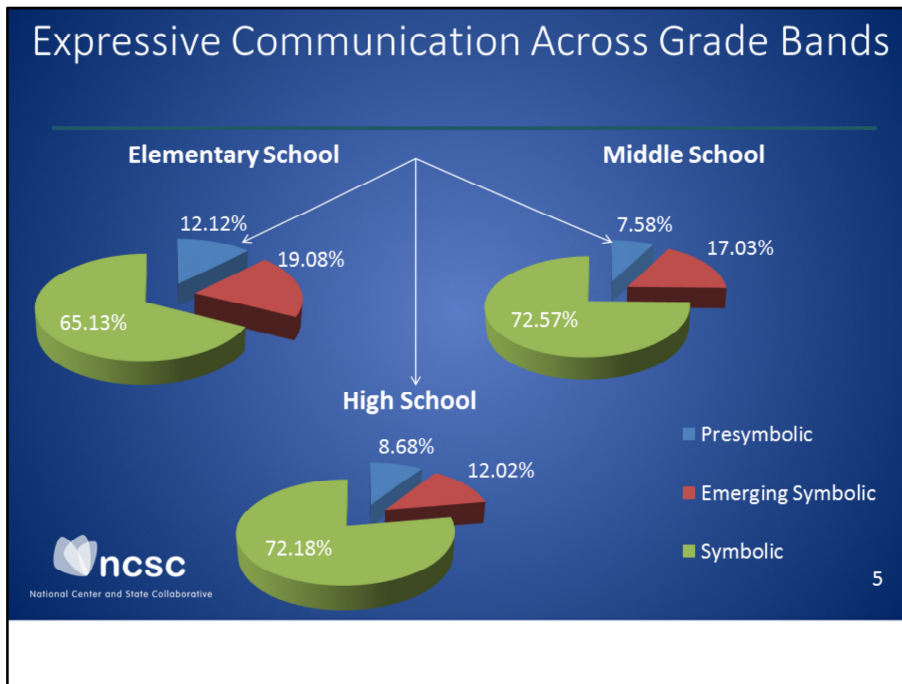
A student can have symbolic understanding or RECEPTIVE COMMUNICATION, but not use symbolic communication EXPRESSIVELY

Approximately 50% understand 1-2 step directions and can complete them independently. An additional 35% require additional cues to follow directions. These students clearly have symbolic communication even though they may not yet have expressive forms that are understood. Approximately 13% alert to and respond to sensory stimulation, while approximately 2% were identified as having uncertain responses. Of the 13%, who alert and respond to sensory (auditory, visual, kinesthetic) likely also understand. The remaining 2% are identified as having uncertain responses. However, it is important to note – that caregivers will have observations that inform the assessment of student understanding. The bottom line here is that ALL Students Communicate – It IS our job to observe and

document the form and intent of their communications.

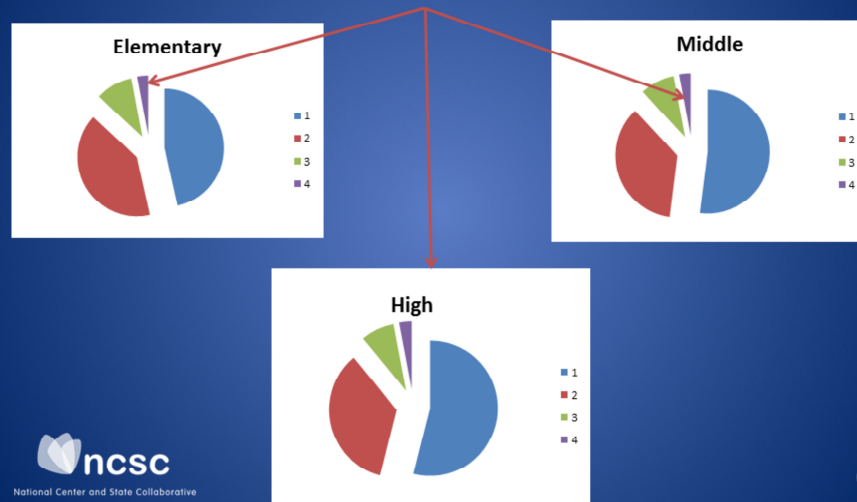
While these data are interesting, the look at these data across the grade-span is compelling.

Expressive Communication Across Grade Bands



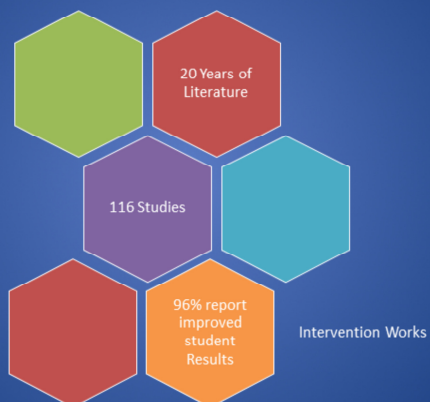
If we look at the expressive communication data across grades elementary to high school; we find that there is essentially little to no difference in the % of students symbolic communication from 3rd grade to high school. It is very important to note that 8-9% of students are still considered pre-symbolic in expressive communication at the high school level which typically 10th or 11th grade! What this implies is that after 11 years of school , specially designed services, preschool... 9% of students are leaving school without an expressive form of communication! Another 12% of students are still emerging in their expressive communication!

Receptive Communication Across the Grade-Span



Similar to the distributions in expressive communication, the distributions in receptive communication also reflect the same percentage of students at each level of receptive understanding. It is interesting to note that most students can follow directions independently, another significant percentage require additional cues. However, the problem these data uncover is that the percentages of students who alert and respond and those with inconsistent responses remain the same at middle and high school. One would assume that by high school, these categories would have significantly fewer students or none at all.

Communication Intervention Works



 **ncsc**

National Center and State Collaborative

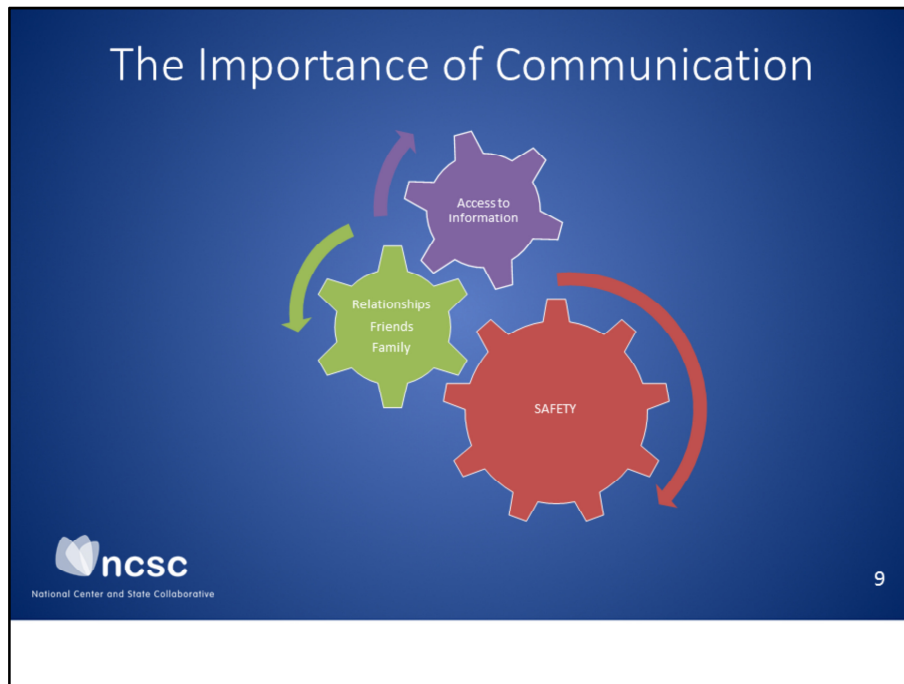
7

116 articles published between 1987 and 2007 in refereed journals described a communication intervention involving one or more participants with severe intellectual and developmental disabilities. The evidence reviewed indicates that 96% of the studies reported positive changes in some aspects of communication. These findings support the provision of communication intervention to persons with severe intellectual and developmental disabilities.

Availability of AAC

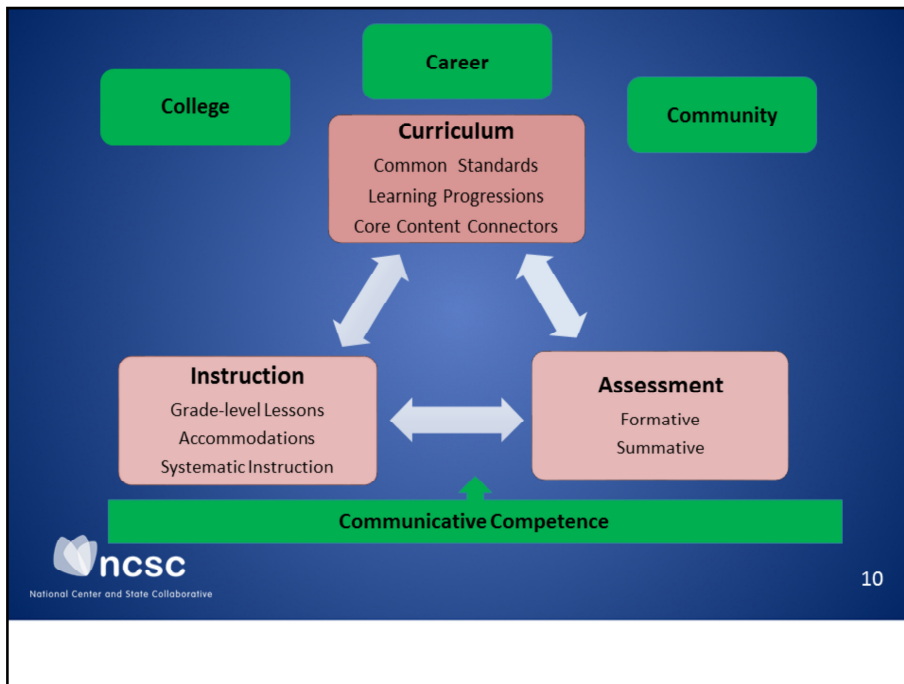


Never before have more augmentative alternative communication (AAC) devices been easier for teachers and students to use and available at reasonable cost. Research evidence suggests that AAC actually enhances the development oral speech as students hear the words more frequently.



The importance of communication for a safe, healthy, enjoyable life cannot be under-estimated. Indeed, the ability to communicate health information – pain. Imagine not being able to tell someone “it hurts”. The ability to share a joke, a secret, or a complaint with a friend – communication is necessary for social relationships. Finally, access to information... access to information is the foundation of what we do in school – help students learn and access information. Whether the information is when can I go home, what’s for lunch, where is Mom or Dad, or what happened to a favorite book character – ALL OF THESE are essential for a happy, safe, even productive life. Communication is far and away THE most important skill students need and is pre-requisite for language development. While all students do communicate – without intervention and AAC - the development of language needed for most of these intents as well as more complex information requests cannot happen.

Indeed, in an Office of Special Education and Rehabilitation Services issued a “Dear Colleague” letter in the Fall of 2014 - advising states and districts that access to communication was essential, the lack of which could be considered a civil rights issue.



The professional development and instructional triangle was introduced early on in the NCSC Community of Practice work groups as the framework for our work.

Communication is the foundation of this work with the ultimate outcome directed to the goal of College, Career, and Community Readiness.

All students have a communication system in place by Kindergarten and are able to learn and demonstrate knowledge using that communication system before they are assessed in the 3rd grade.

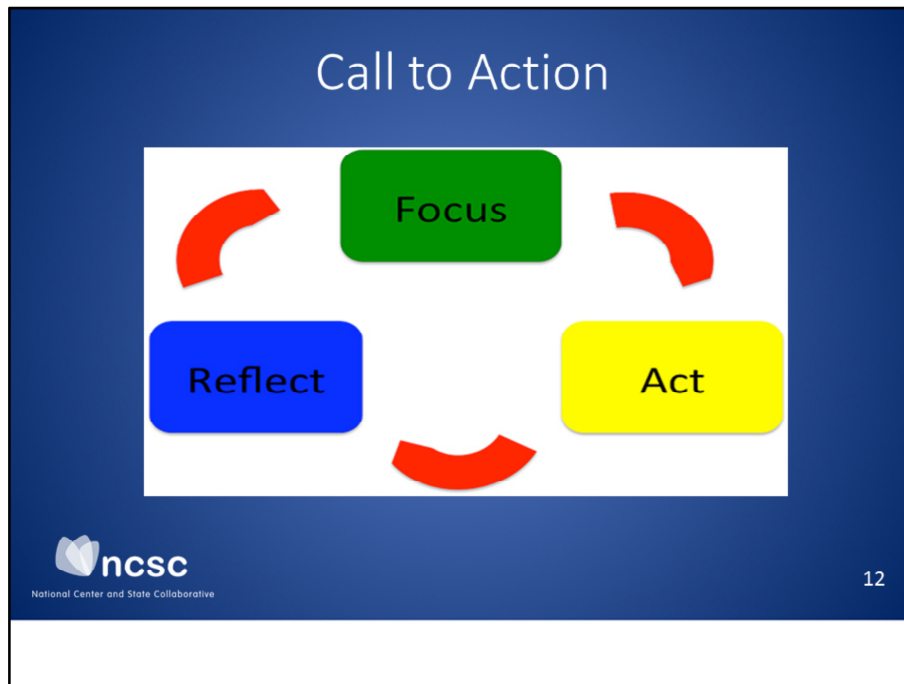
Post School Outcomes?



National Center and State Collaborative

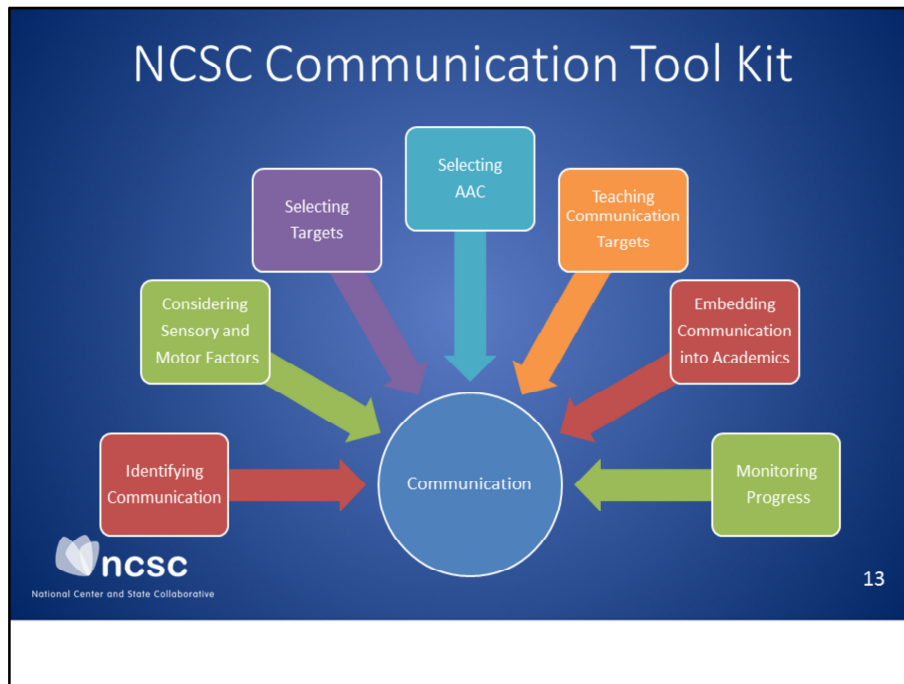
11

Post school outcomes for students who leave school without communication are as might be expected dismal. Few to options for employment, social relationships, or a life in the community. Indeed they are at increased risk for neglect – or in the worst case scenario – abuse.

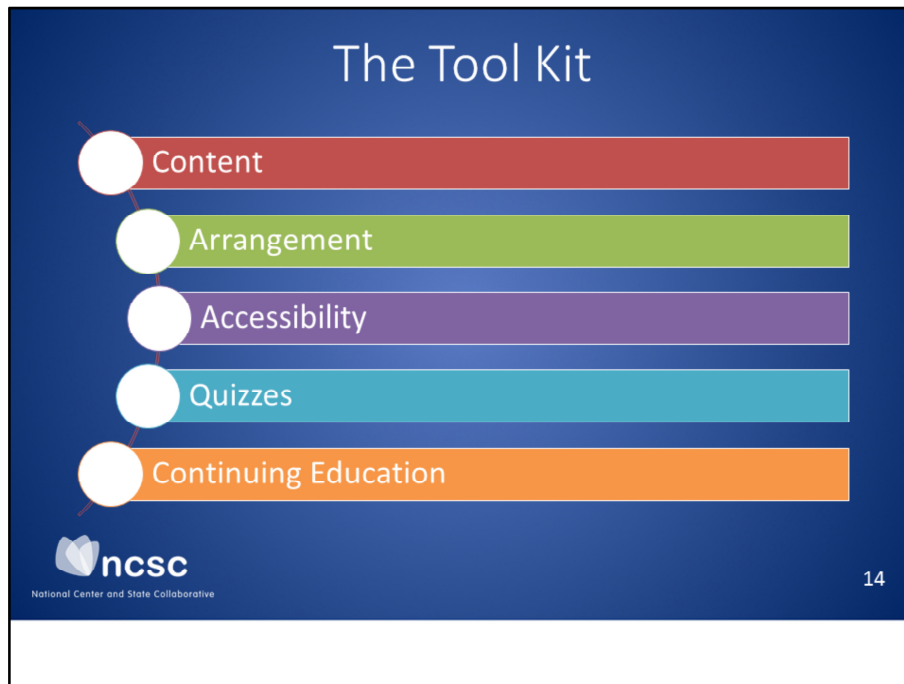


In order for students to engage in conversations with peers; shared interests, experiences, and communication are essential. We are aware of the challenges in standards-based general curriculum and the assessment and yet – we find that students are leaving school without THE most basic skill.

We hope that this presentation results in a reflection in the field about what we CAN do; Focuses time and attention on the skills we need to help students achieve this most basic skill; and causes action that will ultimately improve these results.



This is a graphic illustrating the component parts in the Communication Tool kit. The component parts point to a circle with the word communication inside. The seven component parts include: identifying communication, considering factors – hearing, vision, motor; selecting targets, selecting AAC, teaching communication targets, and embedding communication into academic content



This series of professional development modules includes seven individual communication topics with an orientation module for a set of eight modules.

Each module begins and ends with the same orientation and highlights the outcomes information in the current module. All of the modules have video clips illustrating important points about identifying, supporting, teaching, or monitoring communication. The inclusion of video clips makes the files quite large – therefore if live in a low speed internet access area – you may experience a delay – buffering as the videos load. We apologize in advance for that problem.

The series is produced in Adobe Presenter which allows the user to click on the notes tab which has the entire script as well as captions for the video clips.

Each module will have a set of quiz questions that focuses on the essential elements of the topic covered. Upon completion of the module with an 80% proficiency determination on the quiz.

Check with your state agency for details about using these materials for Continuing

Education. We are currently in the process of applying for CEUs from the American Speech and Hearing Association (ASHA), please visit the site in order to access this information as soon as it is available.

Faculty



Jacqueline F. Kearns, Ed.D

- Human Development Institute
- University of Kentucky
- Education/Severe Disabilities



Jane Kleinert, Ph.D -CCC-SLP

Faculty - College of Health Sciences
University of Kentucky
Speech-Language Pathology



Judy Page, Ph.D – CCC-SLP

- Faculty –College of Health Sciences
- University of Kentucky
- Speech Language Pathology



Lou Ann Land, MS.Ed.

- Human Development Institute
- University of Kentucky
- Educator



National Center and State Collaborative

15

The faculty for the communication tool kit are:

Dr. Jacqueline Kearns – The Human Development Institute at the University of Kentucky. Dr. Kearns’ experience is in education of individuals with severe disabilities, alternate assessments, and communication.

Dr. Jane Kleinert – Faculty at the College of Health Sciences at the University of Kentucky with expertise in speech language pathology.

Dr. Judith Page - Faculty at the College of Health Sciences at the University of Kentucky with expertise in speech language pathology and is the current acting president of the American Speech and Hearing Association (ASHA).

Lou-Ann Land – Has a Master’s degree in the area of severe disabilities and works at the Human Development Institute at the University of Kentucky.

We are glad to provide these modules for you. We hope they help you as you endeavor to improve communication amongst students with severe cognitive disabilities.

References

- Kearns, Towles-Reeves, Kleinert, H. & Kleinert, J., Thomas, M. (2011). Alternate Achievement Standards Assessments: Understanding the Student Population. *Journal of Special Education*.
- Kleinert, H., Kearns, J., Quenemoen, R., & Thurlow, M. (2013). *NCSC GSEG Policy Paper: Alternate Assessments Based on Common Core State Standards: How Do They Relate to College and Career Readiness?* Minneapolis [the NCSC Validity Evaluation \(PDF\)](#).
- Towles-Reeves, E., Kearns, J, Flowers, C., Hart, L., Kerbel, A., Kleinert, H., Quenemoen, R., & Thurlow, M. (2012). *Learner characteristics inventory project report (A product of the NCSC validity evaluation)*. Minneapolis, MN: University of Minnesota, National Center and State Collaborative.
- Snell et. al (2002) *The National Joint Committee on the Communication Needs of Persons with Severe Disabilities*.



National Center and State Collaborative

16

The following references were used in this module