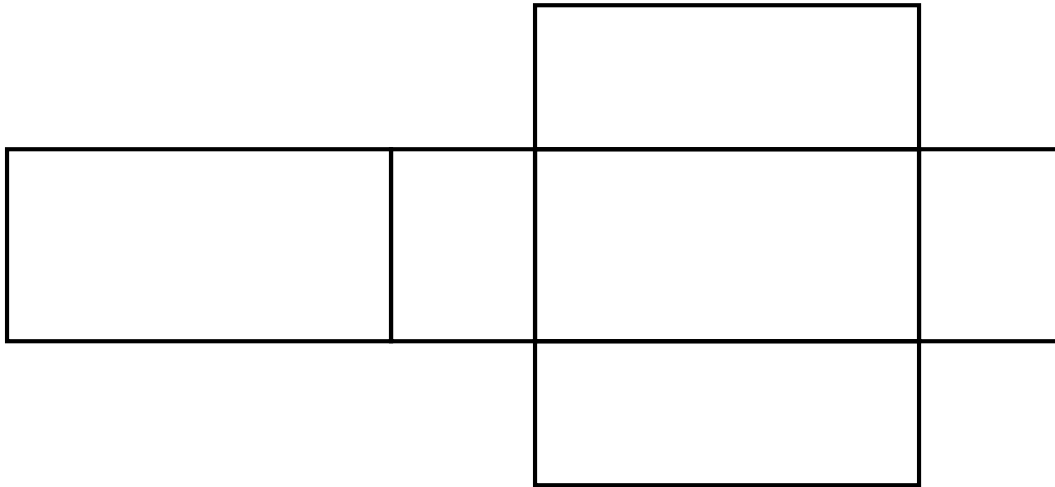
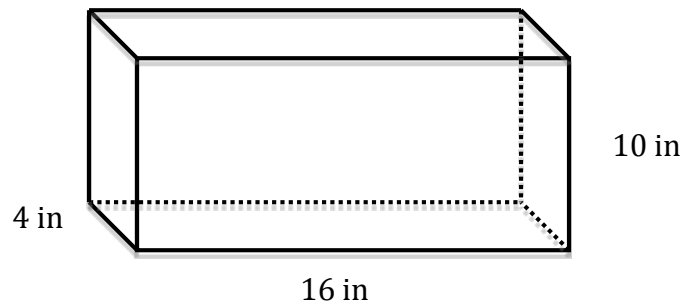


Middle School Geometry Lesson 3 Practice Worksheet

- 1) Cut out the net.  
Fold it and use tape to make a rectangular prism.



- 2) Using the formula, what is the surface area of the rectangular prism below?

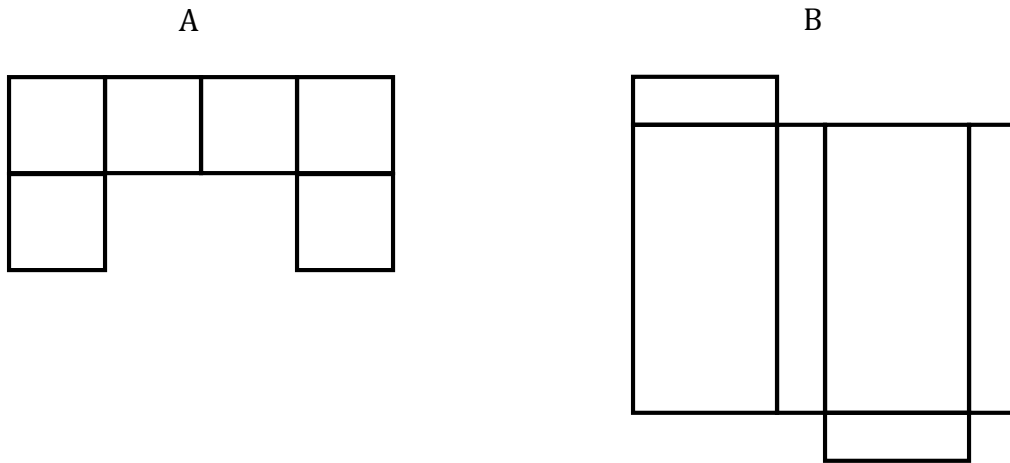


- 3) Create a net for the rectangular prism shown above.  
Label all the faces on your net.  
Find the area of your net.  
Make another copy of your net.  
Cut out and fold your net into a rectangular prism.  
Does your net work?

Use graph paper and a chart to find area.

Middle School Geometry Lesson 3 Practice Worksheet

- 4) Which of the following nets can be folded into a rectangular prism? If you cannot visualize it, cut them out and try folding.



- 5) Create a net for a rectangular prism that is 4 cm long, 3 cm wide, and 2 cm tall.

What is the surface area found when using a net?  
What is the surface area found when using a formula?

- 6) How much wrapping paper will you need to wrap a box 18 inches long, 14 inches wide, and 8 inches high?